

Optional Items



GCC
LaserPro

Laser Engraver

GCC LaserPro Spirit LS

Smart Innovative Evolution at Its Best

Specification		Spirit LS
Work Area		25 x 18 in. (640 x 460 mm) Extendable to 29 x 18 in. (740 x 460 mm)
Max. Part Size (W x L x H)	All doors closed	30 x 19 x 6.5 in. (762 x 482.6 x 165 mm)
	All doors open	30 x ∞ x 6.5 in. (762 x ∞ x 165 mm)
Table Size		31.1 x 20.9 in. (790 x 530 mm)
Dimensions		44.3 x 28.3 x 39.6 in. (1125 x 720 x 1005 mm)
Laser Source		12 to 100W 10.6- μ m sealed CO ₂ Laser / 20W & 60W 9.3- μ m sealed CO ₂ Laser
Cooling		Air-cooled, Operating environment temperature 15°- 30°C (60°- 86°F)
Drive		Closed-loop DC servo control
Maximum Motor Speed		80 IPS**
Throughput*		260.9 in ² / hr (1683 cm ² / hr)
Throughput* with SmartACT™ Enabled		322.1 in ² / hr (2078 cm ² / hr)
Speed Control		Adjustable from 0.1-100% (Up to 16 color-linked speed settings per job)
Power Control		Adjustable from 0-100% (Up to 16 color-linked power settings per job)
Engraving Capability		256-level gray scale image processing capability
Distance Accuracy		0.254 mm or 0.1% of move, whichever is greater
Z-Axis Movement		Automatic
Focus Lens		Standard 2.0", optional 1.5", 2.5", & 4.0" available
Resolution (DPI)		Available 125, 250, 300, 380, 500, 600, 760, 1000, 1500
Computer Interface		10 Base-T Ethernet, Full speed 2.0 USB
Compatible Operating Systems		MS Windows
Display Panel		4-line LCD display showing current file name, total working time, laser power, engraving speed, file(s) loaded into memory buffer, setup and diagnostic menus
Safety		Class I Laser Product Compliant with EN60825, Class II Laser Product Compliant with CDRH, 2006/42/EC Machinery Directive Compliance
Operation Voltage		Below 80Watt, 100-240V AC Auto Switching; 80Watt and above, 200-240V AC Auto Switching
Power Consumption		700W - 4400W
Air Exhaust System		External exhaust system is required, one 4" connection on the back of the machine

* Speed does not equal to throughput. See dealer or visit www.GCCworld.com for more details.

** For 30W and above models. (60 IPS for 12W & 25W models)

△ Specifications are subject to change without prior notice.

Authorized Dealer

ROTHENBORG ApS

GUDUMKØRVEJ 6 DK-7400 HERNING
TEL: +45 97 15 63 33 FAX: +45 97 25 15 75
WWW.ROTHENBORG.DK E-MAIL: MAIL@ROTHENBORG.DK

www.GCCworld.com



Spirit LS

- 25" x 18" (640 x 460 mm) working area
- Up to 80 IPS high working speed
- Patented SmartACT™ motion control technology for higher throughput
- Closed-loop DC servo motor for precise movement of laser carriage
- Reliable DuraGuide motion system with reinforced Kevlar belt delivers superb output quality
- Pass-through front and rear doors to accommodate long working pieces
- Plug and play standard USB port for rapid data transmission
- Patented SmartGUARD™ fire alarm device to provide maximum operation safety

Optional Items



Specification		Spirit LS
Work Area		25 x 18 in. (640 x 460 mm) Extendable to 29 x 18 in. (740 x 460 mm)
Max. Part Size (W x L x H)	All doors closed	30 x 19 x 6.5 in. (762 x 482.6 x 165 mm)
	All doors open	30 x ∞ x 6.5 in. (762 x ∞ x 165 mm)
Table Size		31.1 x 20.9 in. (790 x 530 mm)
Dimensions		44.3 x 28.3 x 39.6 in. (1125 x 720 x 1005 mm)
Laser Source		12 to 100W 10.6- μ m sealed CO ₂ Laser / 20W & 60W 9.3- μ m sealed CO ₂ Laser
Cooling		Air-cooled, Operating environment temperature 15°- 30°C (60°- 86°F)
Drive		Closed-loop DC servo control
Maximum Motor Speed		80 IPS**
Throughput*		260.9 in ² / hr (1683 cm ² / hr)
Throughput* with SmartACT™ Enabled		322.1 in ² / hr (2078 cm ² / hr)
Speed Control		Adjustable from 0.1-100% (Up to 16 color-linked speed settings per job)
Power Control		Adjustable from 0-100% (Up to 16 color-linked power settings per job)
Engraving Capability		256-level gray scale image processing capability
Distance Accuracy		0.254 mm or 0.1% of move, whichever is greater
Z-Axis Movement		Automatic
Focus Lens		Standard 2.0", optional 1.5", 2.5", & 4.0" available
Resolution (DPI)		Available 125, 250, 300, 380, 500, 600, 760, 1000, 1500
Computer Interface		10 Base-T Ethernet, Full speed 2.0 USB
Compatible Operating Systems		MS Windows
Display Panel		4-line LCD display showing current file name, total working time, laser power, engraving speed, file(s) loaded into memory buffer, setup and diagnostic menus
Safety		Class I Laser Product Compliant with EN60825, Class II Laser Product Compliant with CDRH, 2006/42/EC Machinery Directive Compliance
Operation Voltage		Below 80Watt, 100-240V AC Auto Switching; 80Watt and above, 200-240V AC Auto Switching
Power Consumption		700W - 4400W
Air Exhaust System		External exhaust system is required, one 4" connection on the back of the machine

* Speed does not equal to throughput. See dealer or visit www.GCCworld.com for more details.

** For 30W and above models. (60 IPS for 12W & 25W models)

△ Specifications are subject to change without prior notice.

Authorized Dealer

ROTHENBORG ApS

GUDUMKØRVEJ 6 DK-7400 HERNING
TEL: +45 97 15 63 33 FAX: +45 97 25 15 75
WWW.ROTHENBORG.DK E-MAIL: MAIL@ROTHENBORG.DK

www.GCCworld.com

Optional Items



Specification		Spirit LS
Work Area		25 x 18 in. (640 x 460 mm) Extendable to 29 x 18 in. (740 x 460 mm)
Max. Part Size (W x L x H)	All doors closed	30 x 19 x 6.5 in. (762 x 482.6 x 165 mm)
	All doors open	30 x ∞ x 6.5 in. (762 x ∞ x 165 mm)
Table Size		31.1 x 20.9 in. (790 x 530 mm)
Dimensions		44.3 x 28.3 x 39.6 in. (1125 x 720 x 1005 mm)
Laser Source		12 to 100W 10.6- μ m sealed CO ₂ Laser / 20W & 60W 9.3- μ m sealed CO ₂ Laser
Cooling		Air-cooled, Operating environment temperature 15°- 30°C (60°- 86°F)
Drive		Closed-loop DC servo control
Maximum Motor Speed		80 IPS**
Throughput*		260.9 in ² / hr (1683 cm ² / hr)
Throughput* with SmartACT™ Enabled		322.1 in ² / hr (2078 cm ² / hr)
Speed Control		Adjustable from 0.1-100% (Up to 16 color-linked speed settings per job)
Power Control		Adjustable from 0-100% (Up to 16 color-linked power settings per job)
Engraving Capability		256-level gray scale image processing capability
Distance Accuracy		0.254 mm or 0.1% of move, whichever is greater
Z-Axis Movement		Automatic
Focus Lens		Standard 2.0", optional 1.5", 2.5", & 4.0" available
Resolution (DPI)		Available 125, 250, 300, 380, 500, 600, 760, 1000, 1500
Computer Interface		10 Base-T Ethernet, Full speed 2.0 USB
Compatible Operating Systems		MS Windows
Display Panel		4-line LCD display showing current file name, total working time, laser power, engraving speed, file(s) loaded into memory buffer, setup and diagnostic menus
Safety		Class I Laser Product Compliant with EN60825, Class II Laser Product Compliant with CDRH, 2006/42/EC Machinery Directive Compliance
Operation Voltage		Below 80Watt, 100-240V AC Auto Switching; 80Watt and above, 200-240V AC Auto Switching
Power Consumption		700W - 4400W
Air Exhaust System		External exhaust system is required, one 4" connection on the back of the machine

* Speed does not equal to throughput. See dealer or visit www.GCCworld.com for more details.

** For 30W and above models. (60 IPS for 12W & 25W models)

△ Specifications are subject to change without prior notice.

Authorized Dealer

ROTHENBORG ApS

GUDUMKØRVEJ 6 DK-7400 HERNING
TEL: +45 97 15 63 33 FAX: +45 97 25 15 75
WWW.ROTHENBORG.DK E-MAIL: MAIL@ROTHENBORG.DK

www.GCCworld.com

Optional Items



Specification		Spirit LS
Work Area		25 x 18 in. (640 x 460 mm) Extendable to 29 x 18 in. (740 x 460 mm)
Max. Part Size (W x L x H)	All doors closed	30 x 19 x 6.5 in. (762 x 482.6 x 165 mm)
	All doors open	30 x ∞ x 6.5 in. (762 x ∞ x 165 mm)
Table Size		31.1 x 20.9 in. (790 x 530 mm)
Dimensions		44.3 x 28.3 x 39.6 in. (1125 x 720 x 1005 mm)
Laser Source		12 to 100W 10.6- μ m sealed CO ₂ Laser / 20W & 60W 9.3- μ m sealed CO ₂ Laser
Cooling		Air-cooled, Operating environment temperature 15°- 30°C (60°- 86°F)
Drive		Closed-loop DC servo control
Maximum Motor Speed		80 IPS**
Throughput*		260.9 in ² / hr (1683 cm ² / hr)
Throughput* with SmartACT™ Enabled		322.1 in ² / hr (2078 cm ² / hr)
Speed Control		Adjustable from 0.1-100% (Up to 16 color-linked speed settings per job)
Power Control		Adjustable from 0-100% (Up to 16 color-linked power settings per job)
Engraving Capability		256-level gray scale image processing capability
Distance Accuracy		0.254 mm or 0.1% of move, whichever is greater
Z-Axis Movement		Automatic
Focus Lens		Standard 2.0", optional 1.5", 2.5", & 4.0" available
Resolution (DPI)		Available 125, 250, 300, 380, 500, 600, 760, 1000, 1500
Computer Interface		10 Base-T Ethernet, Full speed 2.0 USB
Compatible Operating Systems		MS Windows
Display Panel		4-line LCD display showing current file name, total working time, laser power, engraving speed, file(s) loaded into memory buffer, setup and diagnostic menus
Safety		Class I Laser Product Compliant with EN60825, Class II Laser Product Compliant with CDRH, 2006/42/EC Machinery Directive Compliance
Operation Voltage		Below 80Watt, 100-240V AC Auto Switching; 80Watt and above, 200-240V AC Auto Switching
Power Consumption		700W - 4400W
Air Exhaust System		External exhaust system is required, one 4" connection on the back of the machine

* Speed does not equal to throughput. See dealer or visit www.GCCworld.com for more details.

** For 30W and above models. (60 IPS for 12W & 25W models)

△ Specifications are subject to change without prior notice.

Authorized Dealer

ROTHENBORG ApS

GUDUMKØRVEJ 6 DK-7400 HERNING
TEL: +45 97 15 63 33 FAX: +45 97 25 15 75
WWW.ROTHENBORG.DK E-MAIL: MAIL@ROTHENBORG.DK

www.GCCworld.com

Optional Items



Specification		Spirit LS
Work Area		25 x 18 in. (640 x 460 mm) Extendable to 29 x 18 in. (740 x 460 mm)
Max. Part Size (W x L x H)	All doors closed	30 x 19 x 6.5 in. (762 x 482.6 x 165 mm)
	All doors open	30 x ∞ x 6.5 in. (762 x ∞ x 165 mm)
Table Size		31.1 x 20.9 in. (790 x 530 mm)
Dimensions		44.3 x 28.3 x 39.6 in. (1125 x 720 x 1005 mm)
Laser Source		12 to 100W 10.6- μ m sealed CO ₂ Laser / 20W & 60W 9.3- μ m sealed CO ₂ Laser
Cooling		Air-cooled, Operating environment temperature 15°- 30°C (60°- 86°F)
Drive		Closed-loop DC servo control
Maximum Motor Speed		80 IPS**
Throughput*		260.9 in ² / hr (1683 cm ² / hr)
Throughput* with SmartACT™ Enabled		322.1 in ² / hr (2078 cm ² / hr)
Speed Control		Adjustable from 0.1-100% (Up to 16 color-linked speed settings per job)
Power Control		Adjustable from 0-100% (Up to 16 color-linked power settings per job)
Engraving Capability		256-level gray scale image processing capability
Distance Accuracy		0.254 mm or 0.1% of move, whichever is greater
Z-Axis Movement		Automatic
Focus Lens		Standard 2.0", optional 1.5", 2.5", & 4.0" available
Resolution (DPI)		Available 125, 250, 300, 380, 500, 600, 760, 1000, 1500
Computer Interface		10 Base-T Ethernet, Full speed 2.0 USB
Compatible Operating Systems		MS Windows
Display Panel		4-line LCD display showing current file name, total working time, laser power, engraving speed, file(s) loaded into memory buffer, setup and diagnostic menus
Safety		Class I Laser Product Compliant with EN60825, Class II Laser Product Compliant with CDRH, 2006/42/EC Machinery Directive Compliance
Operation Voltage		Below 80Watt, 100-240V AC Auto Switching; 80Watt and above, 200-240V AC Auto Switching
Power Consumption		700W - 4400W
Air Exhaust System		External exhaust system is required, one 4" connection on the back of the machine

* Speed does not equal to throughput. See dealer or visit www.GCCworld.com for more details.

** For 30W and above models. (60 IPS for 12W & 25W models)

△ Specifications are subject to change without prior notice.

Authorized Dealer

ROTHENBORG ApS

GUDUMKØRVEJ 6 DK-7400 HERNING
TEL: +45 97 15 63 33 FAX: +45 97 25 15 75
WWW.ROTHENBORG.DK E-MAIL: MAIL@ROTHENBORG.DK

www.GCCworld.com

Optional Items



Specification		Spirit LS
Work Area		25 x 18 in. (640 x 460 mm) Extendable to 29 x 18 in. (740 x 460 mm)
Max. Part Size (W x L x H)	All doors closed	30 x 19 x 6.5 in. (762 x 482.6 x 165 mm)
	All doors open	30 x ∞ x 6.5 in. (762 x ∞ x 165 mm)
Table Size		31.1 x 20.9 in. (790 x 530 mm)
Dimensions		44.3 x 28.3 x 39.6 in. (1125 x 720 x 1005 mm)
Laser Source		12 to 100W 10.6- μ m sealed CO ₂ Laser / 20W & 60W 9.3- μ m sealed CO ₂ Laser
Cooling		Air-cooled, Operating environment temperature 15°- 30°C (60°- 86°F)
Drive		Closed-loop DC servo control
Maximum Motor Speed		80 IPS**
Throughput*		260.9 in ² / hr (1683 cm ² / hr)
Throughput* with SmartACT™ Enabled		322.1 in ² / hr (2078 cm ² / hr)
Speed Control		Adjustable from 0.1-100% (Up to 16 color-linked speed settings per job)
Power Control		Adjustable from 0-100% (Up to 16 color-linked power settings per job)
Engraving Capability		256-level gray scale image processing capability
Distance Accuracy		0.254 mm or 0.1% of move, whichever is greater
Z-Axis Movement		Automatic
Focus Lens		Standard 2.0", optional 1.5", 2.5", & 4.0" available
Resolution (DPI)		Available 125, 250, 300, 380, 500, 600, 760, 1000, 1500
Computer Interface		10 Base-T Ethernet, Full speed 2.0 USB
Compatible Operating Systems		MS Windows
Display Panel		4-line LCD display showing current file name, total working time, laser power, engraving speed, file(s) loaded into memory buffer, setup and diagnostic menus
Safety		Class I Laser Product Compliant with EN60825, Class II Laser Product Compliant with CDRH, 2006/42/EC Machinery Directive Compliance
Operation Voltage		Below 80Watt, 100-240V AC Auto Switching; 80Watt and above, 200-240V AC Auto Switching
Power Consumption		700W - 4400W
Air Exhaust System		External exhaust system is required, one 4" connection on the back of the machine

* Speed does not equal to throughput. See dealer or visit www.GCCworld.com for more details.

** For 30W and above models. (60 IPS for 12W & 25W models)

△ Specifications are subject to change without prior notice.

Authorized Dealer

ROTHENBORG ApS

GUDUMKØRVEJ 6 DK-7400 HERNING
TEL: +45 97 15 63 33 FAX: +45 97 25 15 75
WWW.ROTHENBORG.DK E-MAIL: MAIL@ROTHENBORG.DK

www.GCCworld.com

Optional Items



Specification		Spirit LS
Work Area		25 x 18 in. (640 x 460 mm) Extendable to 29 x 18 in. (740 x 460 mm)
Max. Part Size (W x L x H)	All doors closed	30 x 19 x 6.5 in. (762 x 482.6 x 165 mm)
	All doors open	30 x ∞ x 6.5 in. (762 x ∞ x



Anodized Metal

Signage

Stone / Tile

Acrylic

Leather

Textile / Apparel

Laser Engraver

GCC LaserPro Spirit LS



GCC LaserPro Spirit LS

LaserPro Spirit LS distinguishes itself from the competition by combining output quality, reliability, and user-friendliness. With an abundance of useful and innovative features, the Spirit LS sets the standard as the industrial benchmark for laser engravers.

DuraGuide

Systematic and reliable motion system embedded with strong mechanical framework, reinforced Kevlar belts, and accurate servomotor control technology to deliver superb output quality under rapid movement.



SmartLID™

An innovative lid that opens from both ends allowing easier access for daily maintenance.



SmartACT™ (Patented)

Ground-breaking technology that reduces the ramping process, the job running time, which translates into higher productivity.



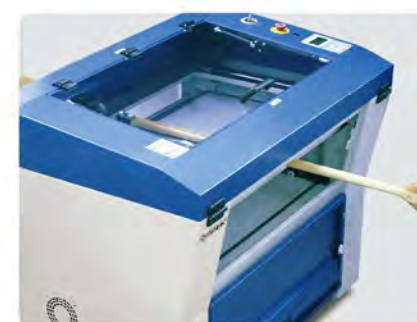
Easy to Use Control Panel

A control panel with coherent hot-key design and graphic icon displays that allows you to directly change the laser parameter setting, set jobs to repeat unlimited times, queue jobs, delete jobs, and more.



SmartPIN AutoFocus

The plug-and-play probe design makes focusing a one-touch process and provides the accuracy and precision required for optimum quality in the lasing process.



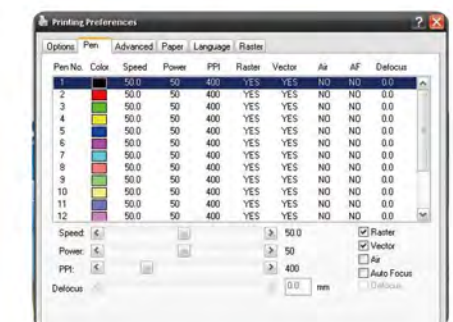
Pass-through Front and Rear Doors

Convenient front and rear door design enables loading of extremely long working pieces.



Key Switch & Emergency Stop

Key switch safeguards the machine from unauthorized use. Prominent emergency button located on the top of the machine allows operators to stop the laser and the motion carriage immediately to provide a safe operating environment.



Innovative Software Features

Various user friendly features such as SmartCENTER, Defocus by pen, allows users to reduce set up time and make easy adjustments to achieve marvelous output quality.