

## Optional Items



Air Compressor Filter



Air Compressor Unit



Air Extraction System



SmartGUARD™ Fire Alarm

Specification		S290LS-20RMZ	S290LS-20SHS	S290LS-30RMZ	S290LS-40HHS	S290LS-50RMZ
Laser Source		Fiber 20W		Fiber 30W	Fiber 40W	Fiber 50W
Beam Quality (M <sup>2</sup> )		1064 nm				
Laser M2		<1.6	<1.3	<1.6	2.5-3.5	<1.6
Laser Peak Power (kW)		>10	>7	>10	>20	>10
Work Area		25 x 18 in. (640 x 460 mm) extendable to 29 x 18 in. (740 x 460 mm)				
Max. Part Size (W x L x H)	All doors closed	31.5 x 22.4 x 6.5 in. (800 x 570 x 165 mm)				
	All doors open	31.5 x ∞ x 6.5 in. (800 x ∞ x 165 mm)				
Table Size		31.1 x 20.9 in. (790 x 530 mm)				
Dimensions		44.3 x 28.3 x 39.6 in. (1125 x 720 x 1005 mm)				
Cooling		Air Cool				
Drive		Closed-loop DC Servo Control				
Maximum Speed*		80 IPS				
Speed Control		Adjustable from 0.1~100% (Up to 16 color-linked speed settings per job)				
Power Control		Adjustable from 0.1~100% (Up to 16 color-linked speed settings per job)				
Engraving Capability		256-level gray scale image processing capability				
Distance Accuracy		0.254 mm or 0.1% of move, whichever is greater				
Z-Axis Movement		Automatic				
Resolution (DPI)		Available 125, 250, 300, 380, 500, 600, 760, 1000, 1500, 3000				
Computer Interface		10 Base-T Ethernet, Full speed 2.0 USB				
Display Panel		4-line LCD panel showing current file name, total working time, laser power, engraving speed, file(s) loaded into memory buffer, setup and diagnostic menus				
Safety		Class 3R Laser Product Compliant with CDRH Class I Laser Product Compliant with EN60825 2006/42/EC Machine Directive Compliance				
Operation Voltage		100V - 220V AC Auto Switching				
Power Consumption		1320W				
Air Extraction System		External exhaust system required, one 4" connection on the back of the machine.				

\* Speed is not equal to throughput. See dealer or visit [www.laserproi.com](http://www.laserproi.com) for more details.

△ Specifications are subject to change without prior notice.

**GCC**  
LaserPro

Laser Engraver

# GCC LaserPro S290 LS

Flat Bed Fiber Laser System with Large Working Area



## S290 LS

- Spacious 29" x 18" working area
- Closed-loop DC servo control for precise and rapid movement
- Superior image engraving quality
- Environment friendly fiber laser technology for metal and plastic engraving
- Patented AutoFocus design to find precise focus with one button
- Easy to use MS Windows based driver interface



Authorized Dealer

**ROTHENBORG ApS**

GUDUMKERVEJ 6 · DK-7400 HERNING  
TEL: +45 97 15 63 33 · FAX: +45 97 25 15 75  
WWW.ROTHENBORG.DK · E-MAIL: MAIL@ROTHENBORG.DK



[www.GCCworld.com](http://www.GCCworld.com)



GCC Headquarters 4F-1., No.236, Fude 2nd Rd., Xizhi Dist., New Taipei City 22151, Taiwan 886-2-6616-6692 Fax: 886-2-2694-6875  
GCC China No.1, Chen Feng Road, Yushan, Kunshan, Jiangsu 215300, China 86-512-5726-1515 Fax: 86-512-5726-1518  
GCC Europe B.V. Eglantierbaan 43-45, 2908 LV, Capelle a/d IJssel, The Netherlands 31-10-458-9367 Fax: 31-10-451-9874  
GCC America, Inc 323 Paseo Tesoro, Walnut, CA 91789, USA 1-909-718-0248 Fax: 1-909-718-0251  
US & Canada Only Toll Free: 1-888-284-5211





Phone Marking

Plastic Marking

Metal Marking

Bar Code Marking

PET Card

Jewelry Marking



Laser Engraver

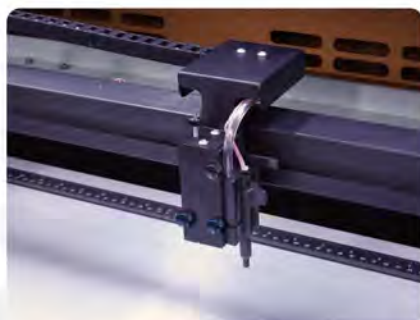
# GCC LaserPro S290 LS

## GCC LaserPro S290 LS

A full table size production marker, GCC LaserPro delivers an easy to operate fiber laser marking system which yields spectacular marking results. The S290 LS is a marking specialist engineered for performance and produces excellent output quality. Whether it is a graphic on metallic surfaces, markings on plastic surfaces, or simply barcodes on metal tools, the S290 LS produces the finest markings. Furthermore, innovative features developed from LaserPro's years of experience makes the S290 LS the most user-friendly system on the market.

### Drag-N-Play

The "Drag-N-Play" feature greatly reduces complex set up procedures and allows users to directly drag the lens carriage to the starting point of a job.



### DuraGuide

Systematic and reliable motion system embedded with strong mechanical framework, reinforced Kevlar belts, and accurate servomotor control technology to deliver superb output quality under rapid movement.

### Pass-through Front and Rear Doors

Convenient front and rear door design enables loading of extremely long working pieces.

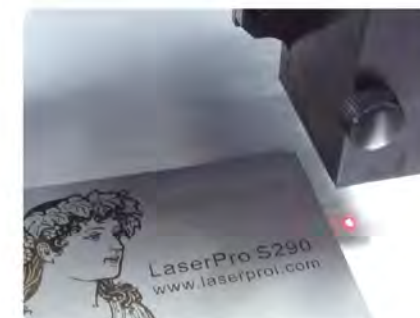


### SmartLID™

An innovative lid that opens from both ends allowing easier access for daily maintenance.

### SmartACT™ (Patented)

Ground-breaking technology that reduces the ramping process, the job running time, which translates into higher productivity.

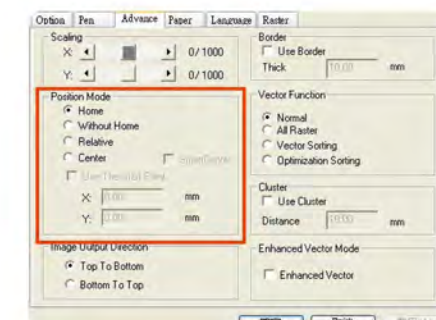


### SmartCENTER™ (Patented)

The super user-friendly SmartCENTER™ function helps end users to easily and automatically locate the center point of objects of any shape vastly eliminating tedious setup time.

### Easy-to-use Control Panel

A user-friendly menu-driven interface system simplifies complex tasks. Hot keys design and job status display facilitates your work and makes it clear and easy to carry out.



### Programmable Origin Modes

Easy to use position modes allow the operator an effortless way to setup a job. Repetitive workflows can be drastically simplified by relocating the origin position to any desired location.